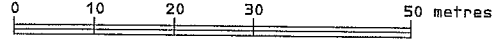


**PHASED STRATA PLAN OF LOT 13, DISTRICT LOT 25G,
WELLINGTON DISTRICT, PLAN VIP85834,**

BCGS 92F. 030

SCALE 1: 600



THE INTENDED PLOT SIZE OF THIS PLAN IS 432mm IN WIDTH BY 280mm IN HEIGHT (B SIZE) WHEN PLOTTED AT A SCALE OF 1: 600

LEGEND

- ⊙ STANDARD IRON POST FOUND.
- ⊕ CONTROL MONUMENT FOUND.
- SL STRATA LOT.
- PT PART.
- LCP LIMITED COMMON PROPERTY
- P-13 PARKING, LCP TO SL 13 (TYPICAL)

INTEGRATED SURVEY AREA No. 20,
CITY OF NANAIMO. NAD83 (CSRS)

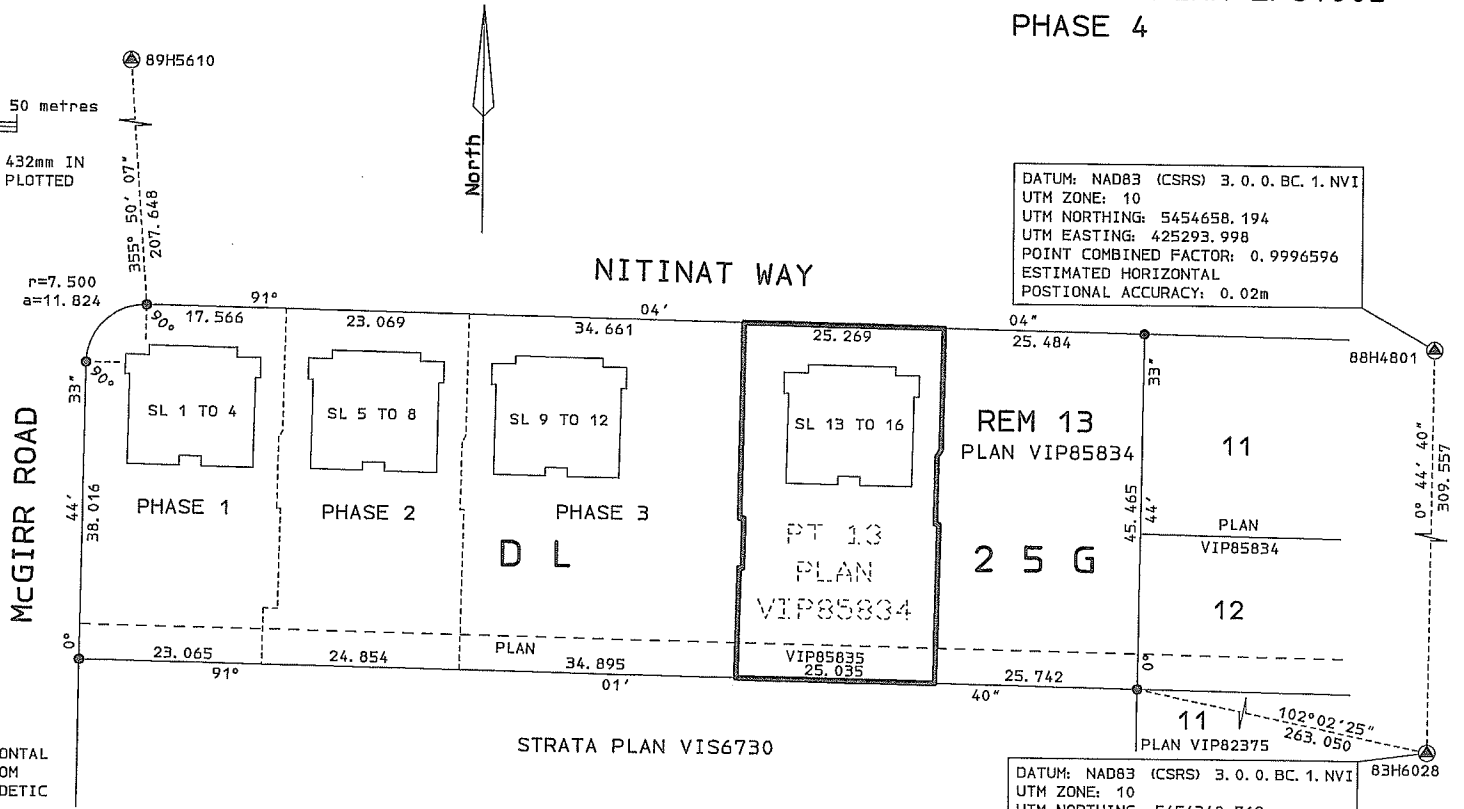
GRID BEARINGS ARE DERIVED FROM OBSERVATIONS BETWEEN GEODETIC CONTROL MONUMENTS 83H6028 AND 88H4801.

THIS PLAN SHOWS HORIZONTAL GROUND-LEVEL DISTANCES EXCEPT WHERE OTHERWISE NOTED. TO COMPUTE GRID DISTANCES MULTIPLY GROUND-LEVEL DISTANCES BY COMBINED FACTOR 0.9996577.

THE UTM COORDINATES AND ESTIMATED HORIZONTAL POSITIONAL ACCURACY HAVE BEEN DERIVED FROM CONVENTIONAL SURVEY OBSERVATIONS TO GEODETIC CONTROL MONUMENTS 83H6028 AND 88H4801.

THIS PLAN IS PHASE FOUR OF FIVE PHASE STRATA PLAN UNDER SECTION 224 OF THE STRATA PROPERTY ACT LYING WITHIN THE JURISDICTION OF THE APPROVING OFFICER FOR THE CITY OF NANAIMO.

Williamson & Associates
Professional Surveyors
3088 Barons Road
Nanaimo B.C. V9T 4B5
FILE: 10087401



SHEET 01 OF 07 SHEETS

**STRATA PLAN EPS1003
PHASE 4**

DATUM: NAD83 (CSRS) 3. 0. 0. BC. 1. NVI
UTM ZONE: 10
UTM NORTHING: 5454658. 194
UTM EASTING: 425293. 998
POINT COMBINED FACTOR: 0. 9996596
ESTIMATED HORIZONTAL
POSITIONAL ACCURACY: 0. 02m

DATUM: NAD83 (CSRS) 3. 0. 0. BC. 1. NVI
UTM ZONE: 10
UTM NORTHING: 5454348. 769
UTM EASTING: 425289. 977
POINT COMBINED FACTOR: 0. 9996595
ESTIMATED HORIZONTAL
POSITIONAL ACCURACY: 0. 02m

NOTE:

ALL PATIOS AND DECKS ARE DEFINED AS TO HEIGHT BY THE CENTER OF THE FLOOR ABOVE OR ITS EXTENSIONS OR WHERE THERE IS NO FLOOR ABOVE BY THE AVERAGE HEIGHT OF A STRATA LOT WITHIN THE SAME BUILDING UNLESS OTHERWISE INDICATED.

CIVIC ADDRESS IS: 6199 NITINAT WAY
NANAIMO B.C.

THE BUILDINGS SHOWN ON THIS STRATA PLAN ARE WITHIN THE EXTERNAL BOUNDARIES OF THE LAND THAT IS THE SUBJECT OF THE STRATA PLAN.

THE BUILDINGS INCLUDED IN THIS STRATA PLAN HAVE NOT AS OF MAY 1st, 2015, BEEN PREVIOUSLY OCCUPIED.

THIS PLAN LIES WITHIN THE REGIONAL DISTRICT OF NANAIMO AND THE CITY OF NANAIMO.

THE FIELD SURVEY REPRESENTED BY THIS PLAN WAS COMPLETED BY BRIAN S. HENNING B.C. L. S. 672, ON THE 1st DAY OF MAY, 2015.

SCALE 1: 200



SHEET 02 OF 07 SHEETS

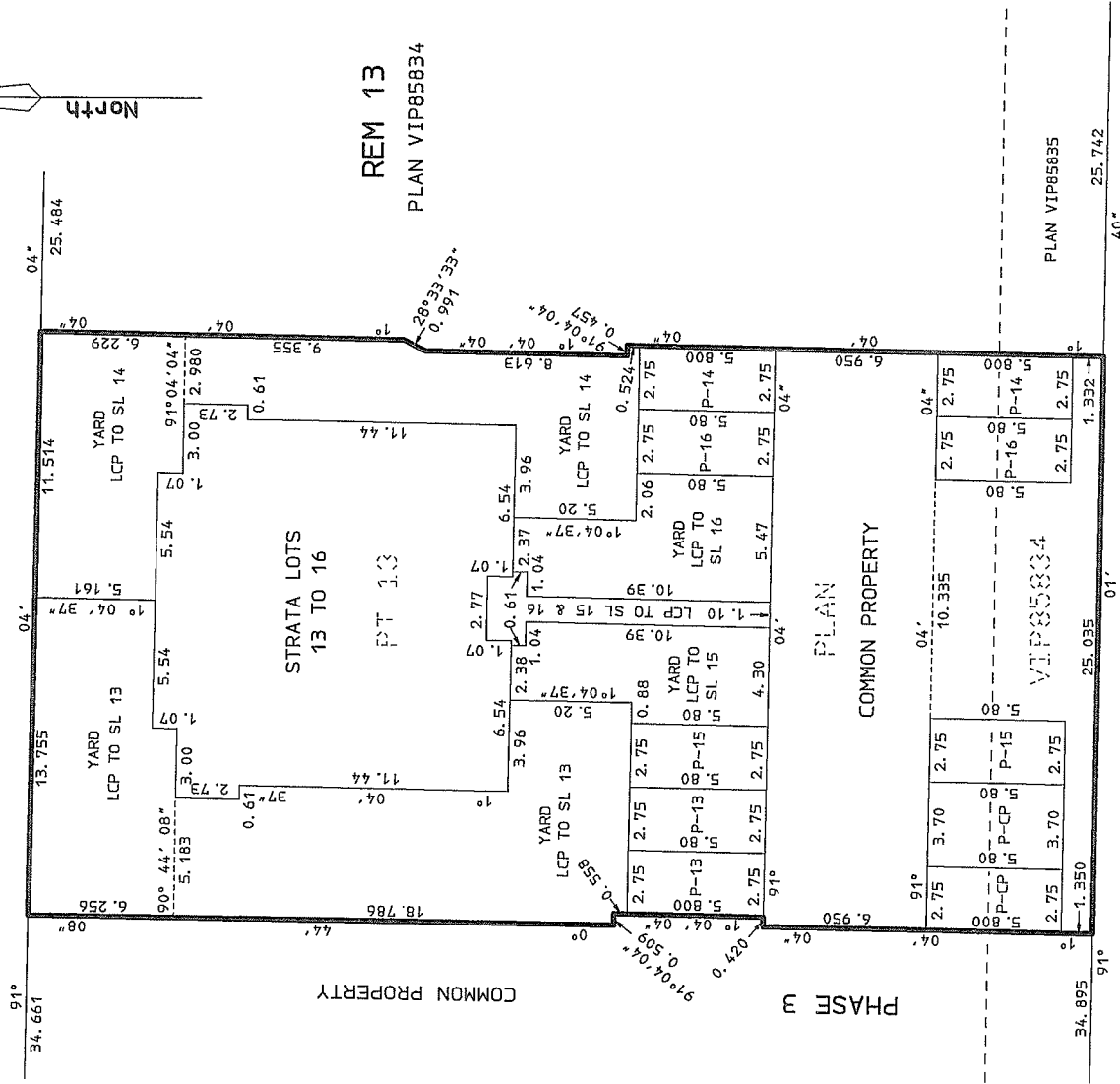
STRATA PLAN EPS1003 PHASE 4

THE INTENDED PLOT SIZE OF THIS PLAN IS 280mm IN WIDTH BY 432mm IN HEIGHT (B SIZE) WHEN PLOTTED AT A SCALE OF 1: 200

LEGEND

P-13 PARKING, LCP TO SL 13 (TYPICAL).

NITINAT WAY



STRATA PLAN VIS6730

TIES TO THE BUILDINGS SHOWN ON THIS SHEET ARE TO THE EXTERIOR SURFACE OF THE CONCRETE FOUNDATION.

BEARINGS OF ALL BUILDING WALLS AND BOUNDARIES DEFLECT BY EVEN MULTIPLES OF 90° FROM THE GIVEN REFERENCE BEARING UNLESS OTHERWISE INDICATED.

THE FIELD SURVEY REPRESENTED BY THIS PLAN WAS COMPLETED ON THE 1st DAY OF MAY, 2015.
BRIAN S. HENNING B. C. L. S. 672

Williamson & Associates
 Professional Surveyors
 3088 Barons Road
 Nanaimo B. C. V9T 4B5
 FILE: 10087402

**PLAN OF PART OF STRATA LOTS 13 AND 14
CRAWL SPACE**

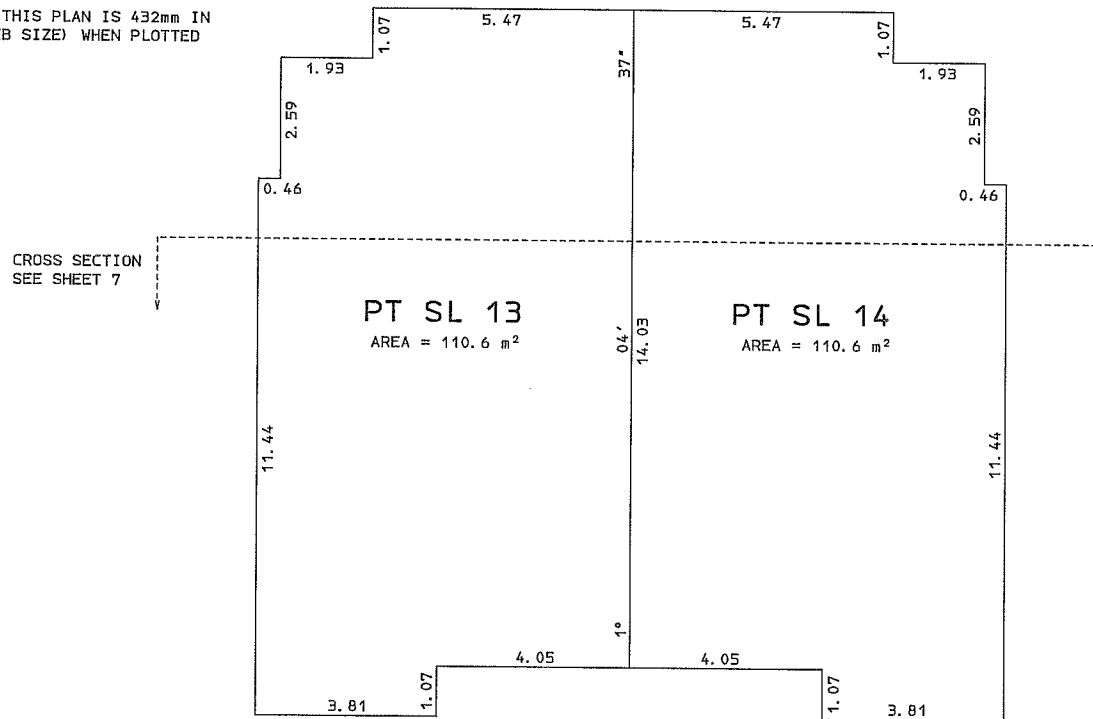
SHEET 03 OF 07 SHEETS

**STRATA PLAN EPS1003
PHASE 4**

SCALE 1: 100



THE INTENDED PLOT SIZE OF THIS PLAN IS 432mm IN WIDTH BY 280mm IN HEIGHT (B SIZE) WHEN PLOTTED AT A SCALE OF 1: 100



Williamson & Associates
Professional Surveyors
3088 Barons Road
Nanaimo B.C. V9T 4B5
FILE: 10087403

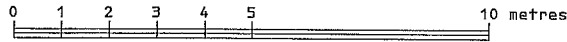
THE FIELD SURVEY REPRESENTED BY THIS PLAN
WAS COMPLETED ON 1st DAY OF MAY, 2015.
BY BRIAN S. HENNING B. C. L. S. 672.

**PLAN OF PART OF STRATA LOTS 13, 14, 15 AND 16
LOWER FLOOR**

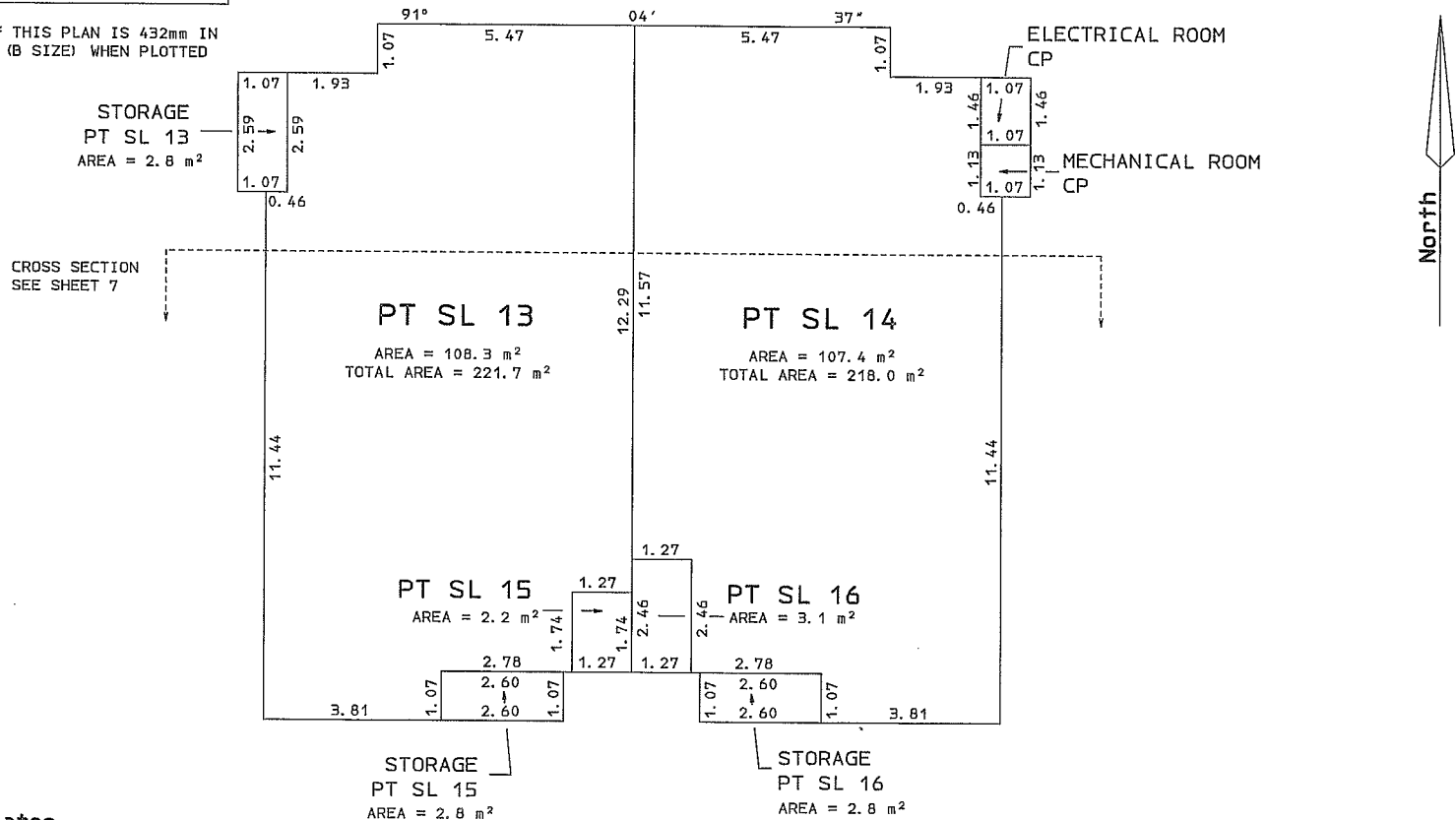
SHEET 04 OF 07 SHEETS

**STRATA PLAN EPS1003
PHASE 4**

SCALE 1: 100



THE INTENDED PLOT SIZE OF THIS PLAN IS 432mm IN WIDTH BY 280mm IN HEIGHT (B SIZE) WHEN PLOTTED AT A SCALE OF 1: 100

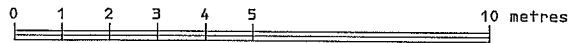


Williamson & Associates
Professional Surveyors
3088 Barons Road
Nanaimo B.C. V9T 4B5
FILE: 10087404

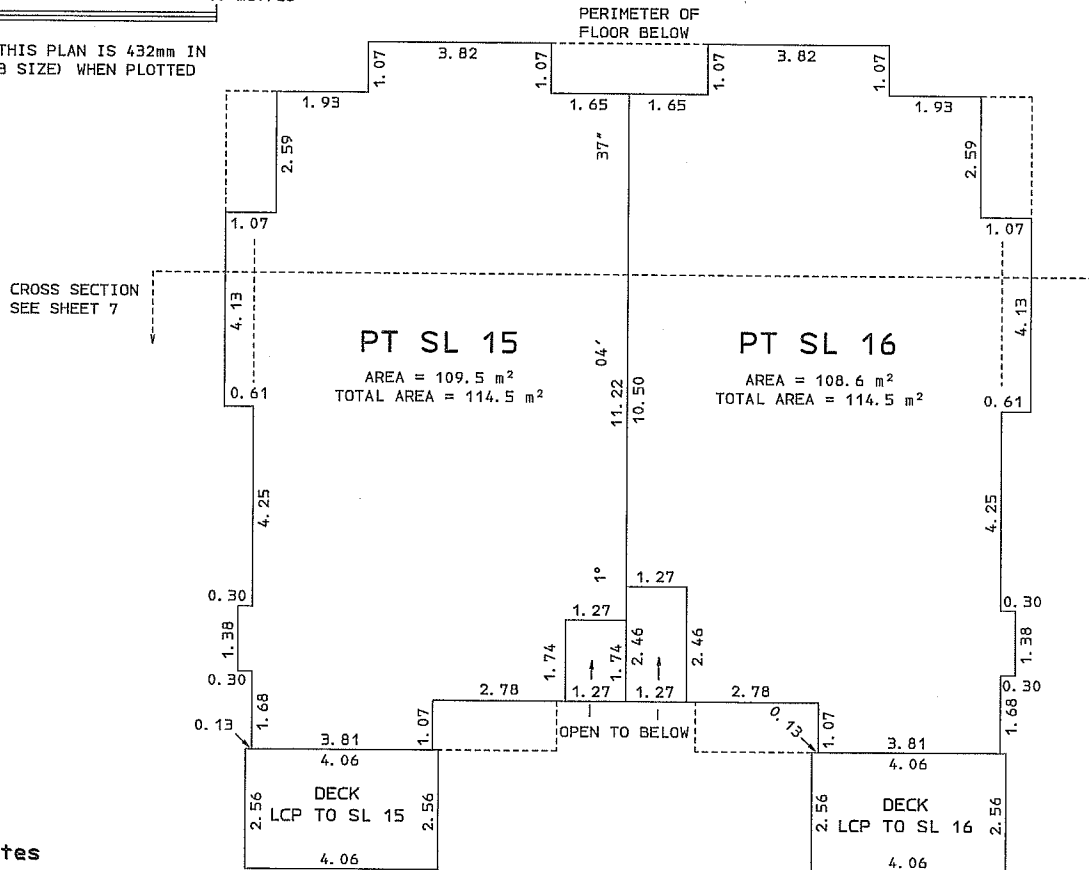
THE FIELD SURVEY REPRESENTED BY THIS PLAN WAS COMPLETED ON 1st DAY OF MAY, 2015. BY BRIAN S. HENNING B.C. L.S. 672.

**PLAN OF PART OF STRATA LOTS 15 AND 16
UPPER FLOOR**

SHEET 05 OF 07 SHEETS
**STRATA PLAN EPS1003
PHASE 4**



THE INTENDED PLOT SIZE OF THIS PLAN IS 432mm IN WIDTH BY 280mm IN HEIGHT (B SIZE) WHEN PLOTTED AT A SCALE OF 1:100



Williamson & Associates
Professional Surveyors
3088 Barons Road
Nanaimo B.C. V9T 4B5
FILE: 10087405

THE FIELD SURVEY REPRESENTED BY THIS PLAN WAS COMPLETED ON 1st DAY OF MAY, 2015.
BY BRIAN S. HENNING B. C. L. S. 672.

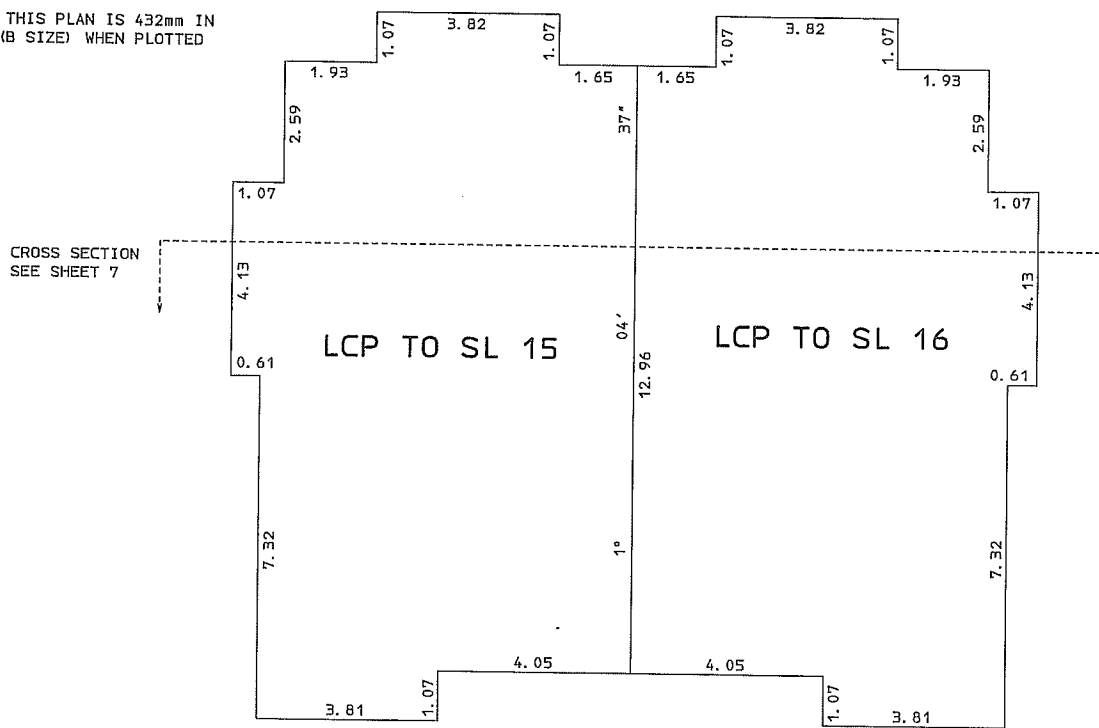
PLAN OF PART OF LIMITED COMMON PROPERTY
ATTIC

SHEET 06 OF 07 SHEETS
STRATA PLAN EPS1003
PHASE 4

SCALE 1: 100



THE INTENDED PLOT SIZE OF THIS PLAN IS 432mm IN WIDTH BY 280mm IN HEIGHT (B SIZE) WHEN PLOTTED AT A SCALE OF 1: 100



Williamson & Associates
Professional Surveyors
3088 Barons Road
Nanaimo B.C. V9T 4B5
FILE: 10087406

THE FIELD SURVEY REPRESENTED BY THIS PLAN
WAS COMPLETED ON 1st DAY OF MAY, 2015.
BY BRIAN S. HENNING B. C. L. S. 672.

PLAN SHOWING CROSS SECTION

SCALE 1: 100

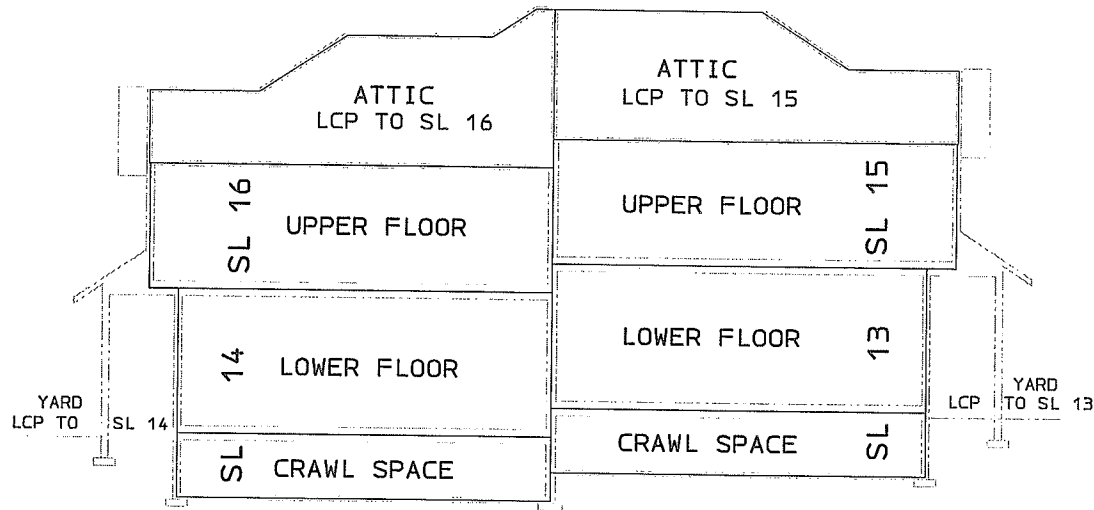


THE INTENDED PLOT SIZE OF THIS PLAN IS 432mm IN WIDTH BY 280mm IN HEIGHT (B SIZE) WHEN PLOTTED AT A SCALE OF 1: 100

SHEET 07 OF 07 SHEETS

STRATA PLAN EPS1003

PHASE 4



Williamson & Associates
Professional Surveyors
3088 Barons Road
Nanaimo B.C. V9T 4B5
FILE: 10087407

THE FIELD SURVEY REPRESENTED BY THIS PLAN
WAS COMPLETED ON 1st DAY OF MAY, 2015.
BY BRIAN S. HENNING B. C. L. S. 672.